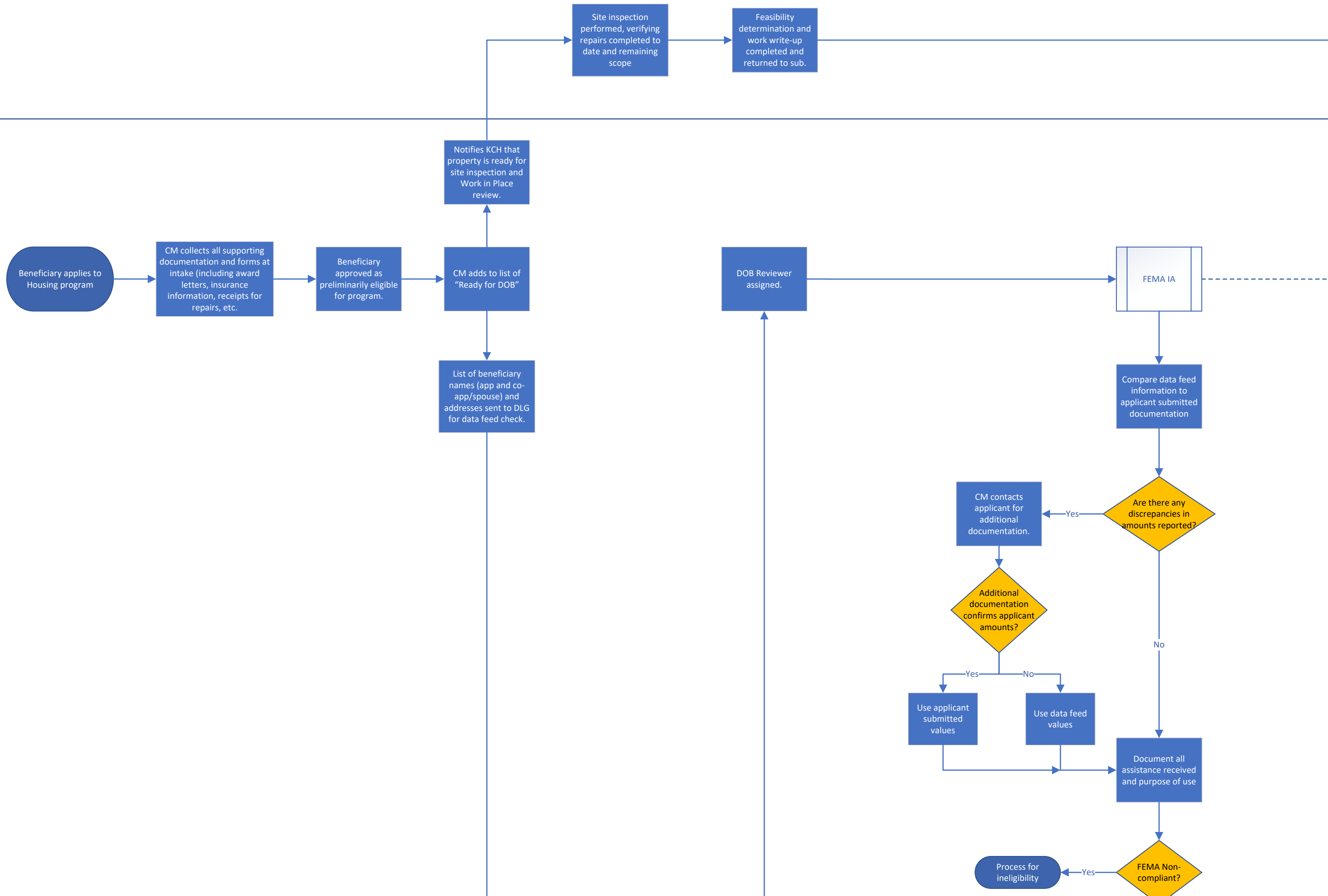
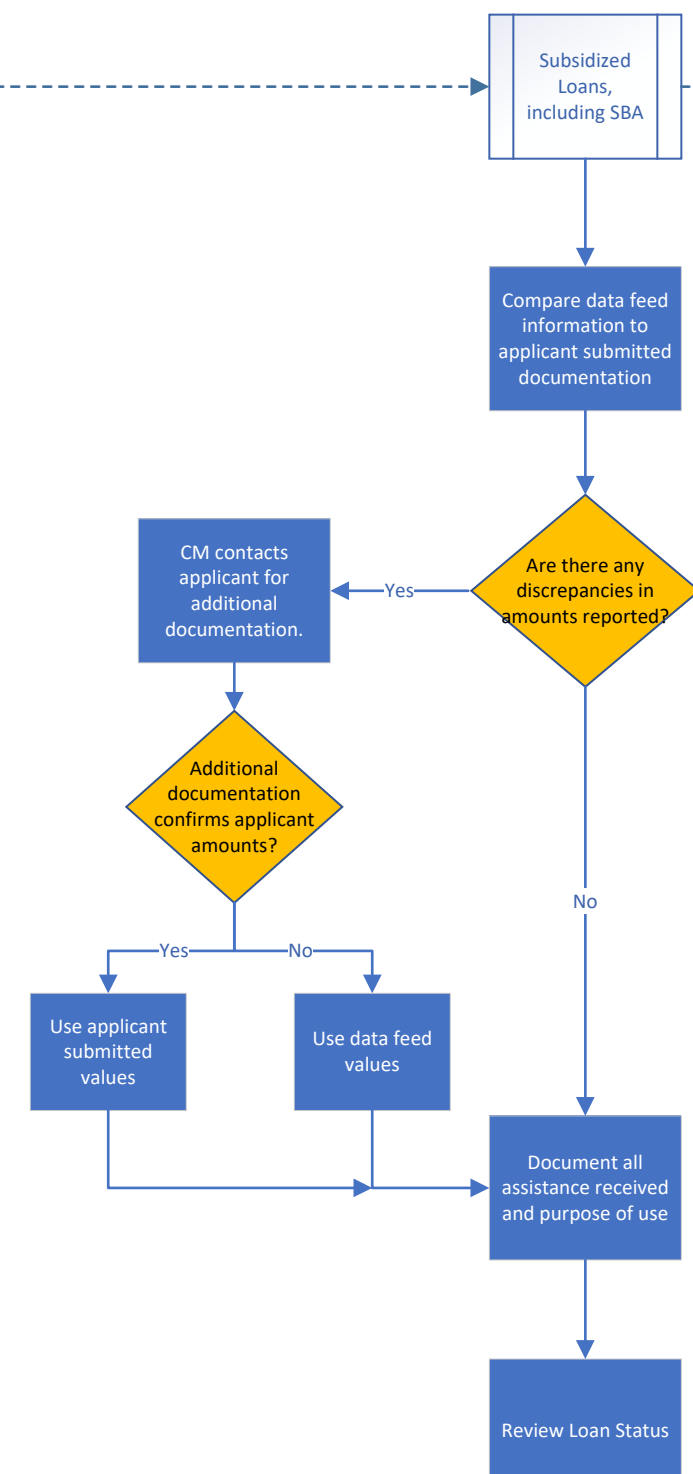
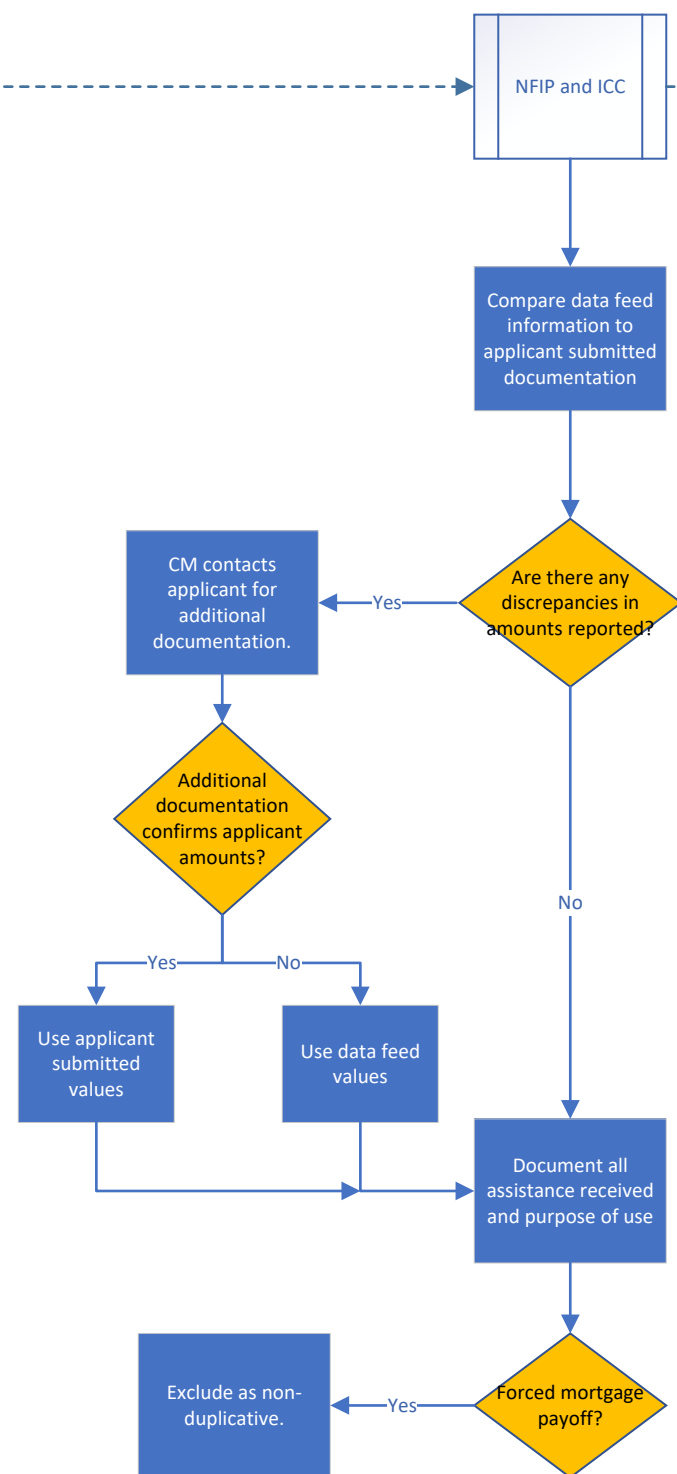
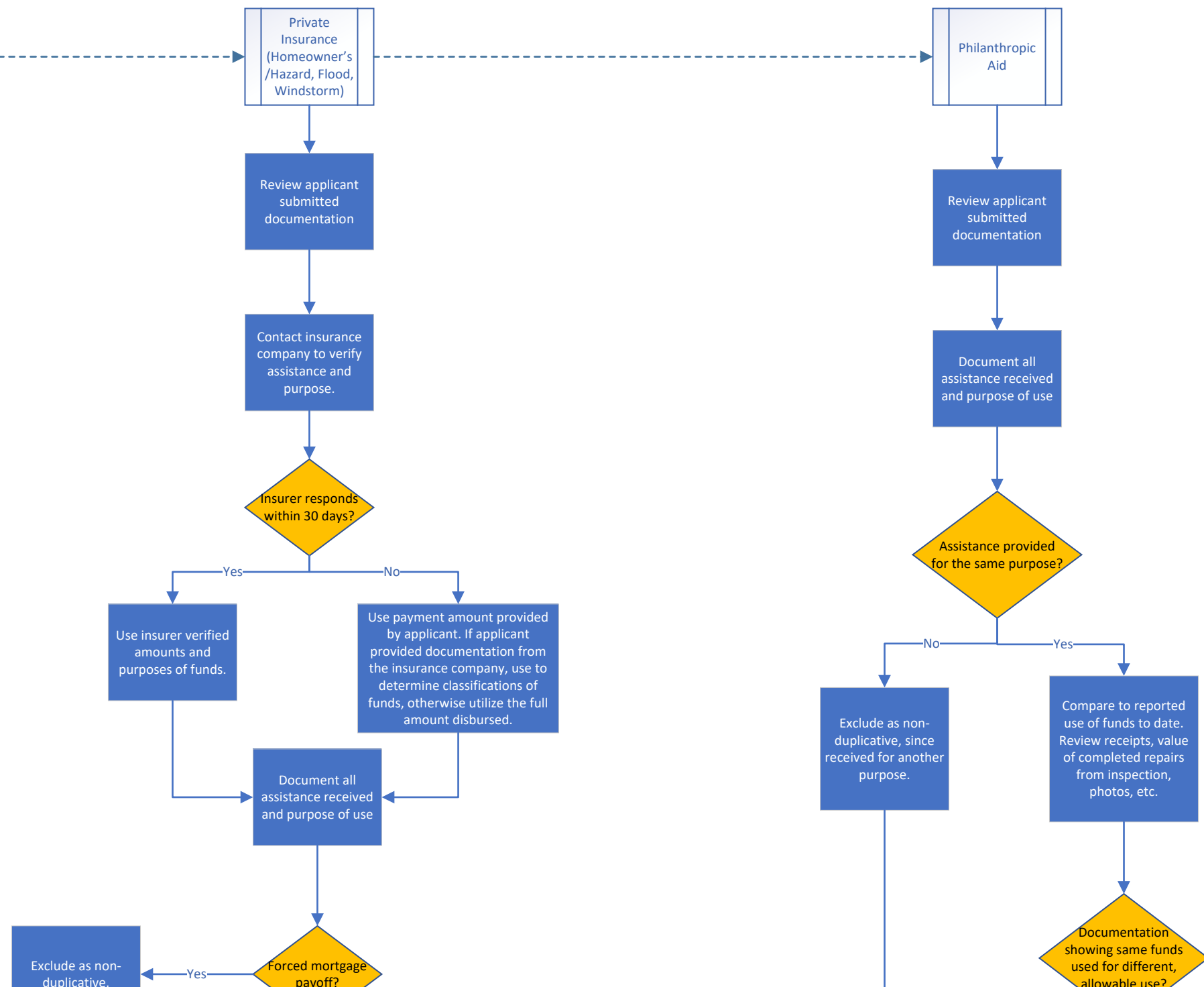


Housing Program DOB Process Flow

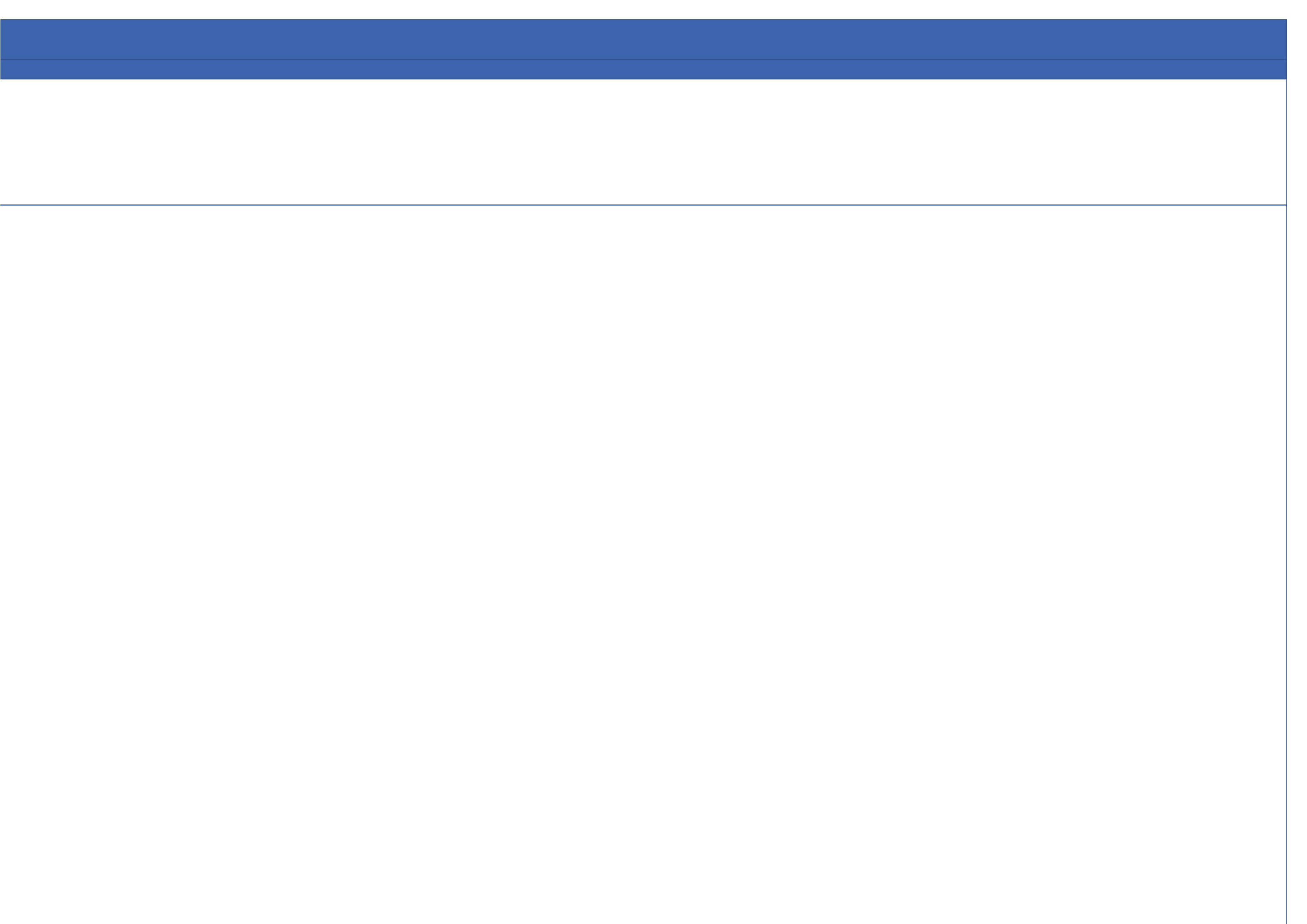
KHC

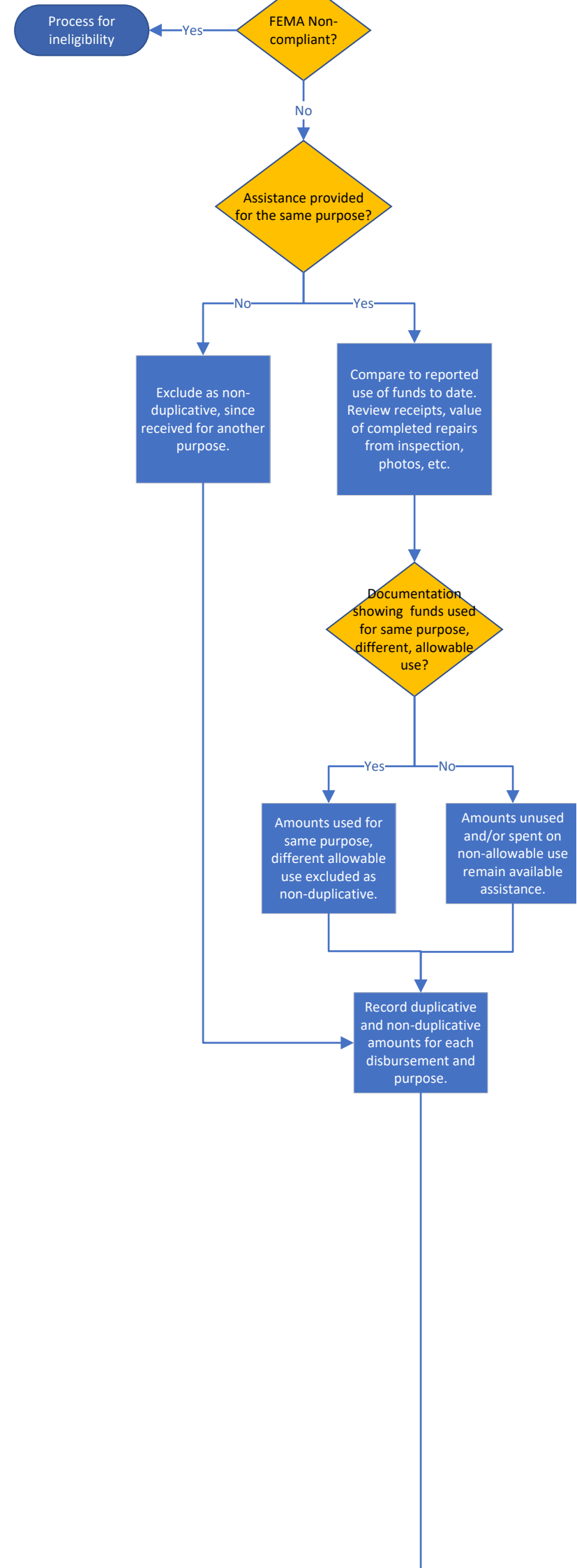


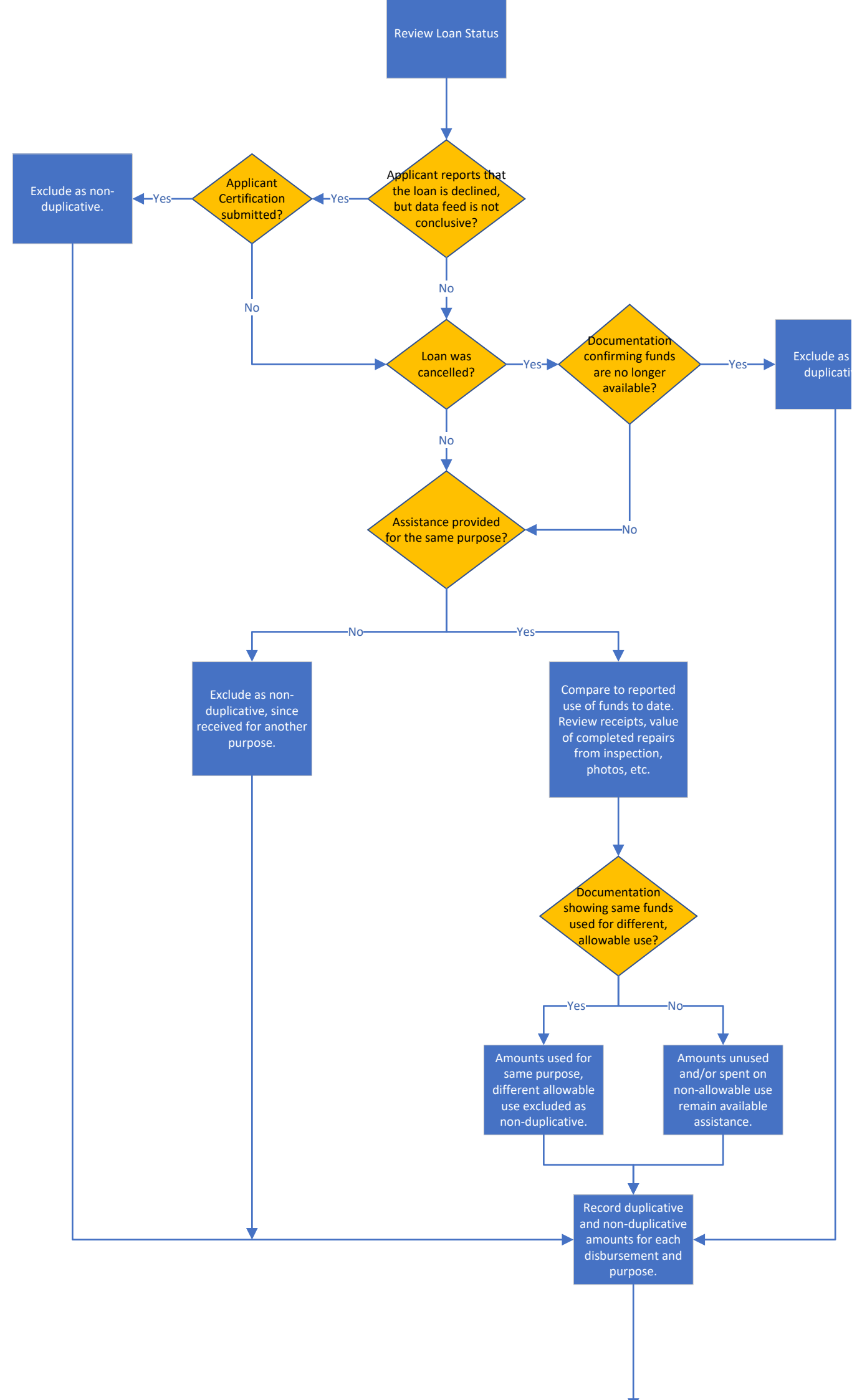
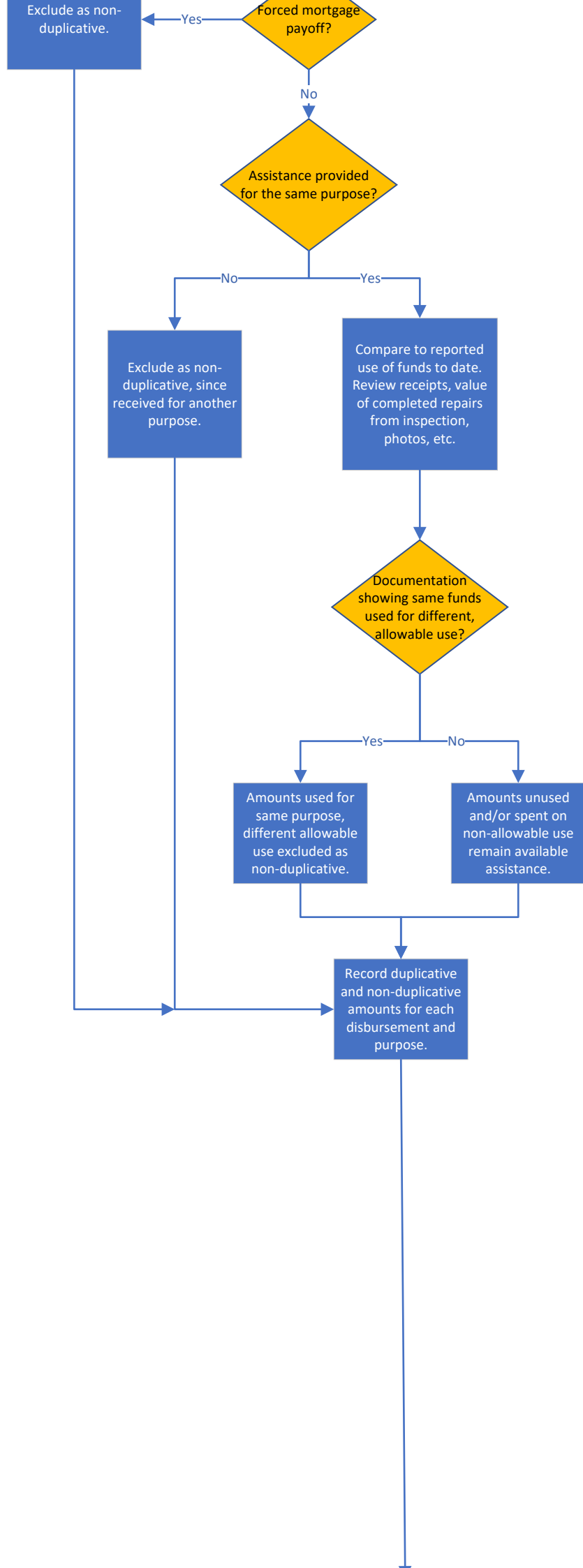


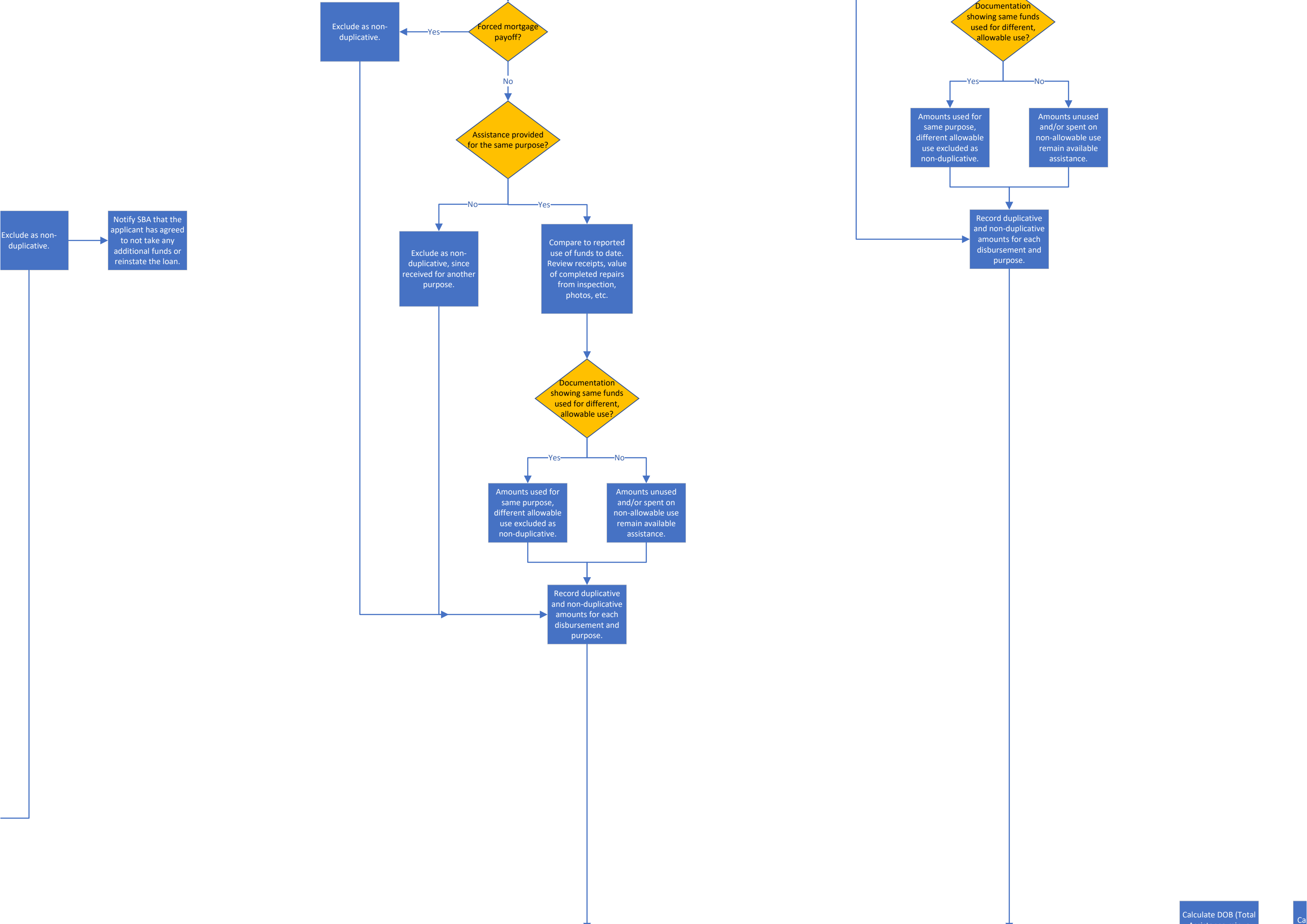


Phase









Calculate Maximum

Maximum Award

Yes

Final Award = Program Cap

Generate draft

Subrecipient notifies beneficiary of award amount.

Beneficiary appeals within 30 days?

Appeals process initiated – additional documentation requested from beneficiary.

Appeal Approved?

Notification of rejected appeal and original award returned to beneficiary.

Beneficiary withdrawn from program.

Subrecipient and beneficiary execute grant agreement and subrogation agreement.

Be

