



Building Bridges to Strengthen Kentucky's Workforce

Reentry and Employment Services Branch

Reentry and Employment Services (RES) Branch Overview

Mission Statement

Empowering all Kentuckians to achieve personal success by building bridges through the Putting Kentuckians First initiative that will provide employment, recovery resources, education and training, career services, vocational rehabilitation, and court-ordered programs with a focused emphasis on those in diversion and re-entry pathways to Kentucky's workforce that will create a brighter path to self-sufficiency and achievement of their lifelong learning goals.

Vision

To remove barriers for those in diversion and reentry pathways to Kentucky's workforce through integrated and collaborative resource alignment among state, regional, and local agencies for all Kentuckians to achieve their education, employment, and training goals effectively and efficiently.

Reentry is...

Workforce Development

Adult Education

Economic Development

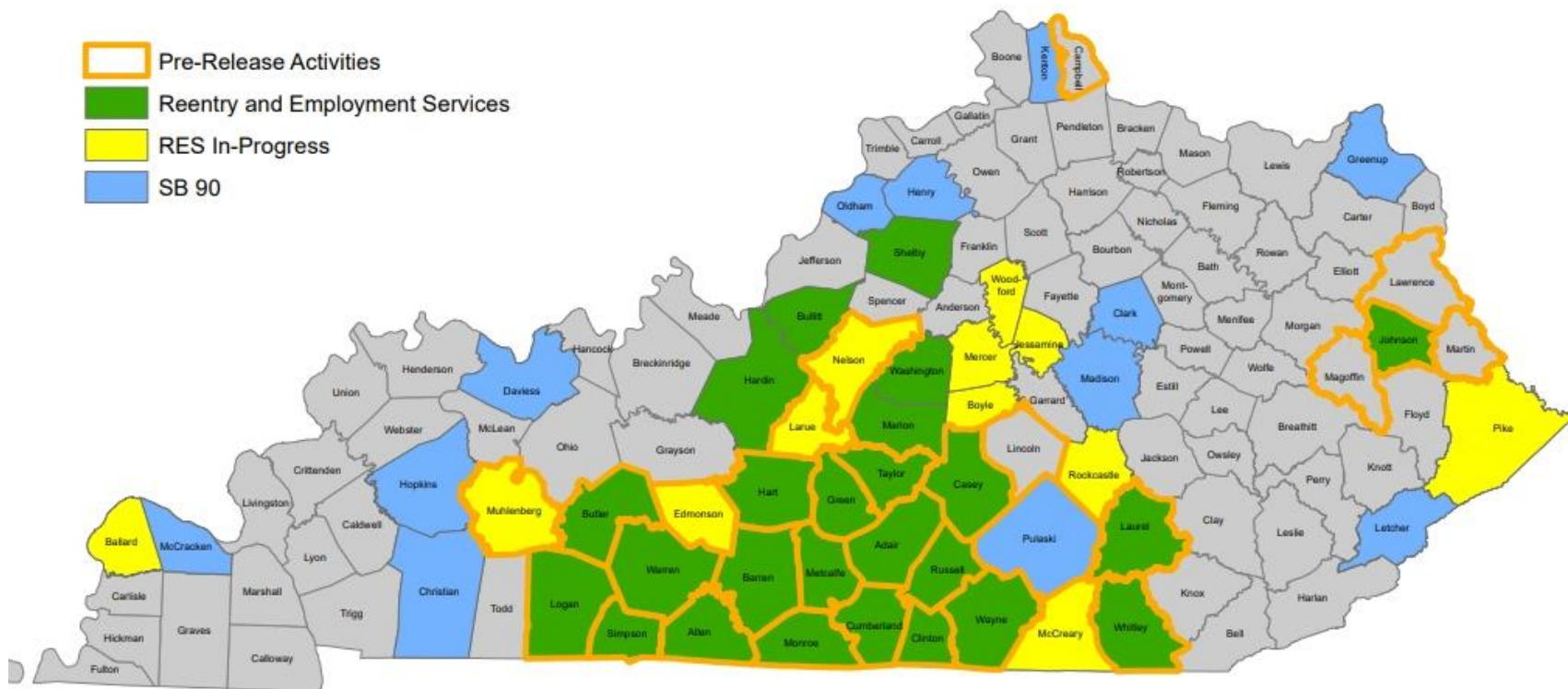
Social Justice

Fiscally Impactful

Generationally Impactful

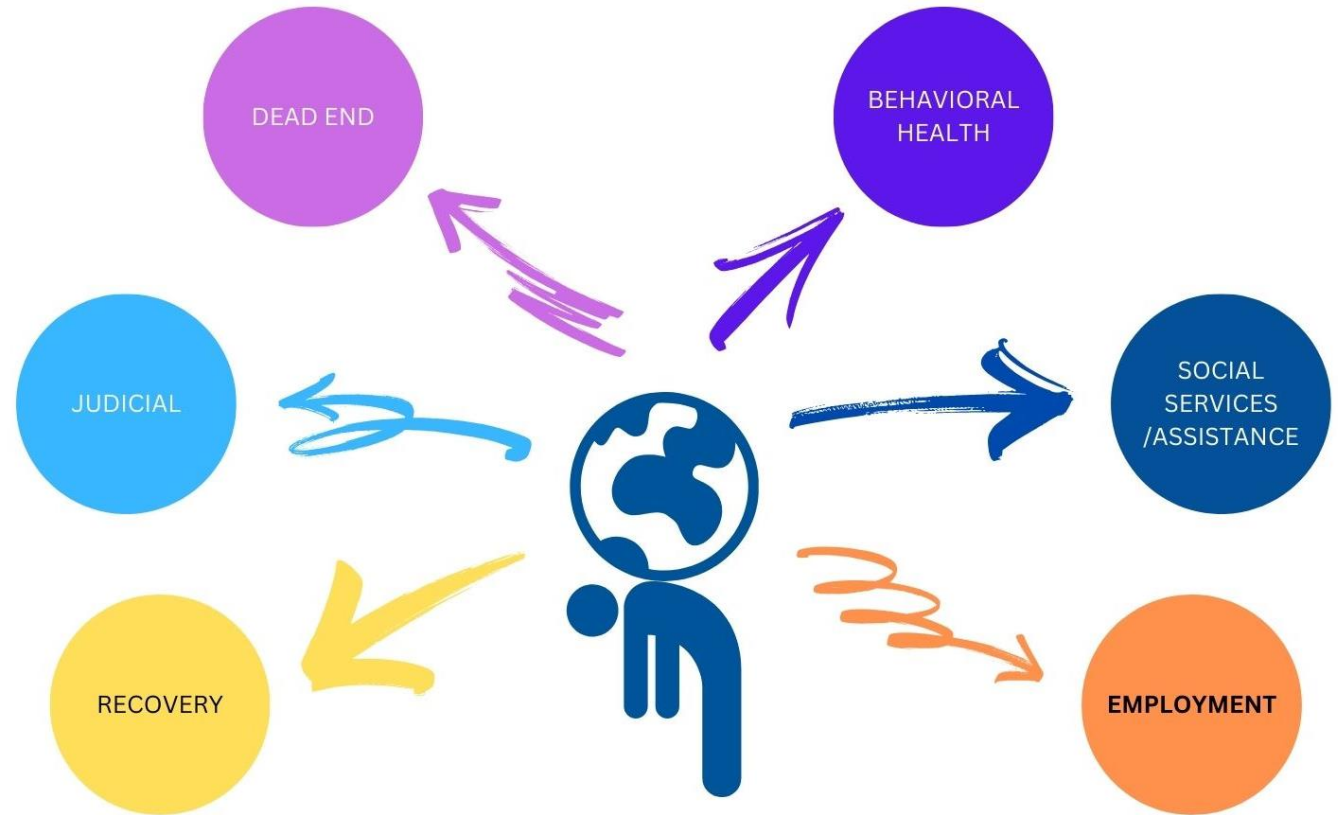
Community Building

Office of Adult Education Reentry Services



The Problem

- Duplicative Services
- “Silos of Excellence”
- Bad Actors
- Low awareness of resources
- Low/no accountability
- Hard to navigate



RES Operations Overview

Putting Kentuckians First

- Putting Kentuckians First and our facilitated Targeted Orientation Classes partner with local judicial entities (Judges, Jailers, County Attorney Offices, Probation and Parole, Specialty Courts) to create referral and accountability pipelines for individuals using a county-by-county approach.

ID Services for Individuals enrolled in Reentry Activities/KYAE

- Coordinate with the Kentucky Department of Transportation to facilitate the completion of ID requests for individuals participating in a credentialed training program, Adult Education program, or work-release program.
- This process is facilitated jointly by the Putting Kentuckians First Navigator and Adult Education Instructors

RES Operations (Incarceration)

Pre-release Classes in Local/Regional Detention Centers

- An educational forum is presented at local detention centers to individuals who are 30/60/90 days from release. The pre-release classes are open to both state and county inmates. Organizations are allowed into the facility to present information to individuals that will assist them on their transition back into society.

Reentry Bootcamps

- Facilitated in partnerships with the Local Workforce Development Boards – currently operating in the south-central region-- individuals participate in a weeklong session of programming including soft skills, financial literacy, digital literacy, OSHA 10, CPR/first aid.
- The week ends with an onsite job fair with local employers. Post-release connectivity and support provided by RES Branch.

Credential Training in Local Detention Centers

- The Reentry and Employment Services Branch serves in facilitation, funding and operations establishing credential training programs at local detention facilities in collaboration with the local KY Adult Education provider and local Community and Technical Colleges.

Apprenticeship & Pre-Apprenticeship Training (Adult Institutions)

- Apprenticeship and pre-apprentice training is offered via the Kentucky Department of Corrections and in partnership with Trade Unions

RES Operations (SB90)

Educational/Occupational Assessment

- Every participant in the SB90 program is referred to the Adult Education office in the county in which they are booked, but may request service in any of the 120 counties. Participants complete the statutory minimum assessments, discuss workforce and educational goals, and align with a behavioral health treatment plan.

Adult Education Services

- Adult Education College and Career Navigators or other designated staff facilitate career and educational planning, advise participants of opportunities offered. (i.e. training, employment, post secondary education, high school equivalency, financial literacy, digital literacy, etc.)

Barrier Relief

- Enrollment and active participation in SB90 provides access to the Behavioral Health Trust fund for supportive service funding facilitated by EKCEP.

Educational/ Workforce Barrier Relief

- In coordination with KYAE and College and Career Navigators, participants have access to the Behavioral Health Trust Fund to eliminate educational, training and workforce barriers.

PUTTING KENTUCKIANS FIRST INITIATIVE



MISSION STATEMENT

Empowering Kentuckians to achieve personal success by providing access to employment, recovery resources, education and training, career services, vocational rehabilitation, and court-ordered classes that create a brighter path to achieving their goals.

ASSISTANCE WITH:

- Finding substance abuse and recovery programs
- Medicaid/healthcare support
- Food, clothing, and shelter
- Obtaining birth certificates, IDs, driver's licenses, and social security cards
- Employment and job readiness
- Transportation
- Disability resources
- Adult education, GED® diploma, other certification, and training
- Childcare and family services

We believe in your success.

- Kentucky Office of Vocational Rehabilitation
- Kentucky Workforce Development Board
- EKCEP - Strategic Initiative for Transformational Employment
- Kentucky Career Development Office
- Kentucky Office of Adult Education

For more information about our program, contact one of our Navigators:

Jana Shell, Lead Navigator
Cumberlands/East Kentucky
Cell: 270.566.1125
Email: jana.shell@cadd.org

Alana Reynolds, Navigator
Cumberlands/Corrections
Cell: 270.566.8923
Email: alana.reynolds@lcadd.org

Michael Uptegraff, Navigator
Southcentral/Lincoln Trail
Cell: 860-917-4480
Email: Michaelu@southcentralworkforce.com

FROM THE REENTRY & EMPLOYMENT SERVICES BRANCH, COMMONWEALTH OF KY, "PUTTING KENTUCKIANS FIRST"

MOVE YOUR CAREER & LIFE FORWARD.

TARGETED SERVICES ORIENTATION



A COLLABORATIVE EFFORT FROM:

- ✓ Reentry and Employment Services Branch, Commonwealth of KY
- ✓ Lincoln Trail and South Central Workforce Development Boards
- ✓ KY Adult Education
- ✓ Career TEAM
- ✓ Career Development Office & Office of Vocational Rehabilitation

POINT OF CONTACT:
Michael Uptegraff
Regional Coordinator
(270) 883-1821



A proud partner of the americanjobcenter network.

If you're interested in ANY of the following, our hour-long session IN YOUR COUNTY is exactly what you need:

- CAREER NAVIGATION ASSISTANCE & SUPPORT
- ESL CLASSES
- DIGITAL LITERACY WORKSHOPS
- COLLEGE & CAREER PREP
- TRAINING OPPORTUNITIES & GUIDANCE
- RECOVERY AND/OR REENTRY RESOURCES
- GED INFORMATION



Third Friday of every month
9:00 am to 10:30 am (EST)

HARDIN/LARUE COUNTY



Hardin County Adult Ed.
ECTC Campus, 600 College St.
OTB 300, Room 314
Elizabethtown, KY 42701

Other Supported Activities

Bridging the Gap for individuals to employers

- Presentations and engagement with Local Workforce partners, Workforce Development, Economic Development, Chamber of Commerce, etc.

Employer Education and Support

- Support and Participation with Kentucky Chamber Foundation – PLAN Events and Fair Chance Academy, Workforce Board Job Fairs, resources and events.

Involvement with local Reentry Councils

- Increasing awareness – Mutually Reinforcing Activities

Support/ Partnership for funding opportunities – Opioid Abatement and other grant funding

- Addressing Resource Deserts

RES

Transition the Judiciary to Motivational vs. Punitive

- Realignment of traditional views of court obligations

County-Specific Approach

- Ensuring the most relevant and assessable resources and support are available

Activating State, Regional and Local Partners

- Co-Enrollment = Co-Service

Congruent Programming with Limited Variance

- Operations are not impacted by an individual's geographical location.

FY24 Success

Growth –Footprint expanded from 12 to 58 counties across the Commonwealth (+ 11 SB90 counties)

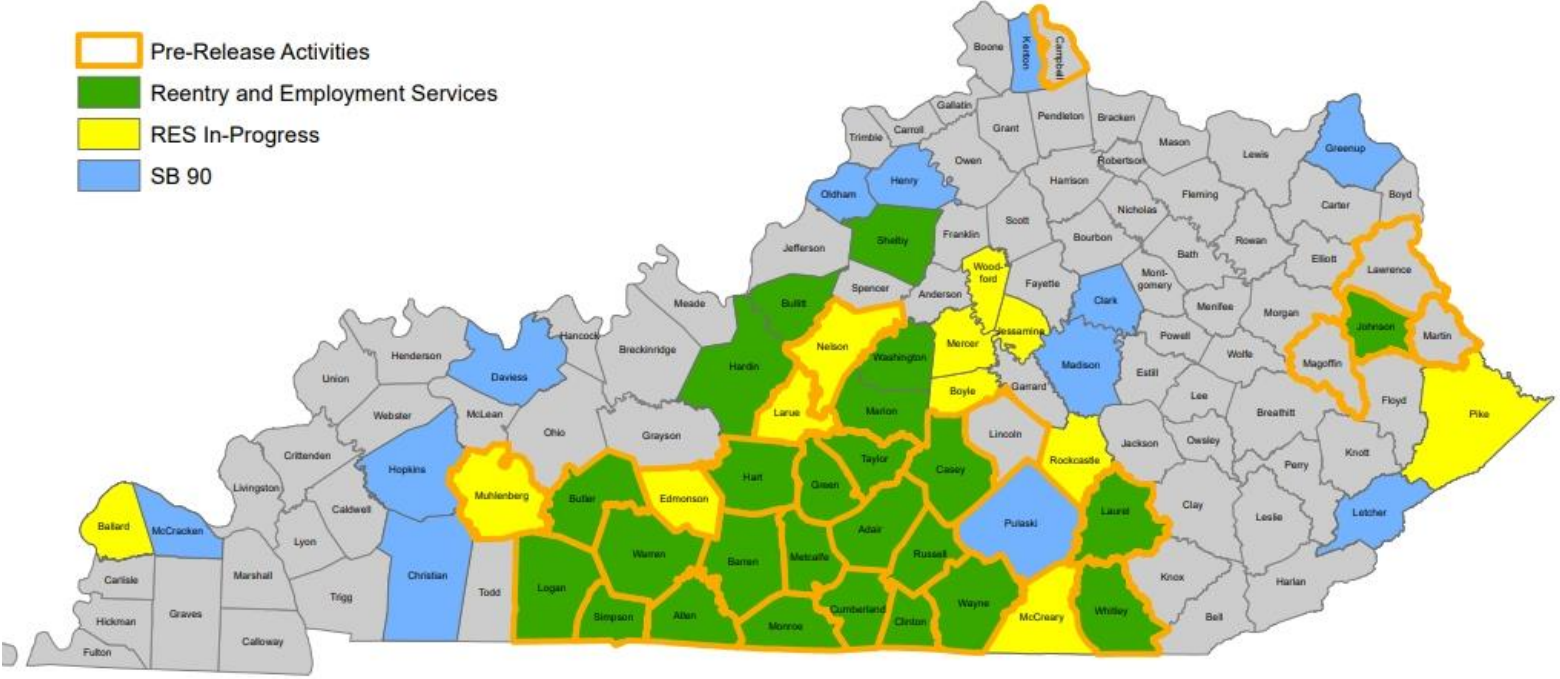
- Fielding requests for expansion weekly
- Presentations at federal, state, and local level – best practices

More than 2100 individuals served/impacted (FY 24)

- 1004 incarcerated individuals served – Pre-release classes
- 420 enrolled into Putting Kentuckians First
- 318 Enrolled in SB90
- 400 separate individual clients assisted
- 103 IDs/SSN/Birth Certificates
 - Employment and Retention Data Range 70%-80% consistently program total
 - 100% Graduation Training Cohort #5, #6 and #7

Where do we go from here?

Office of Adult Education Reentry Services



Questions?

Aaron Poynter, Director

Reentry and Employment Services Branch

Office of Adult Education

Education and Labor Cabinet

Aaron.poynter@ky.gov

KYAE.KY.GOV

